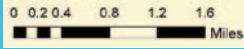
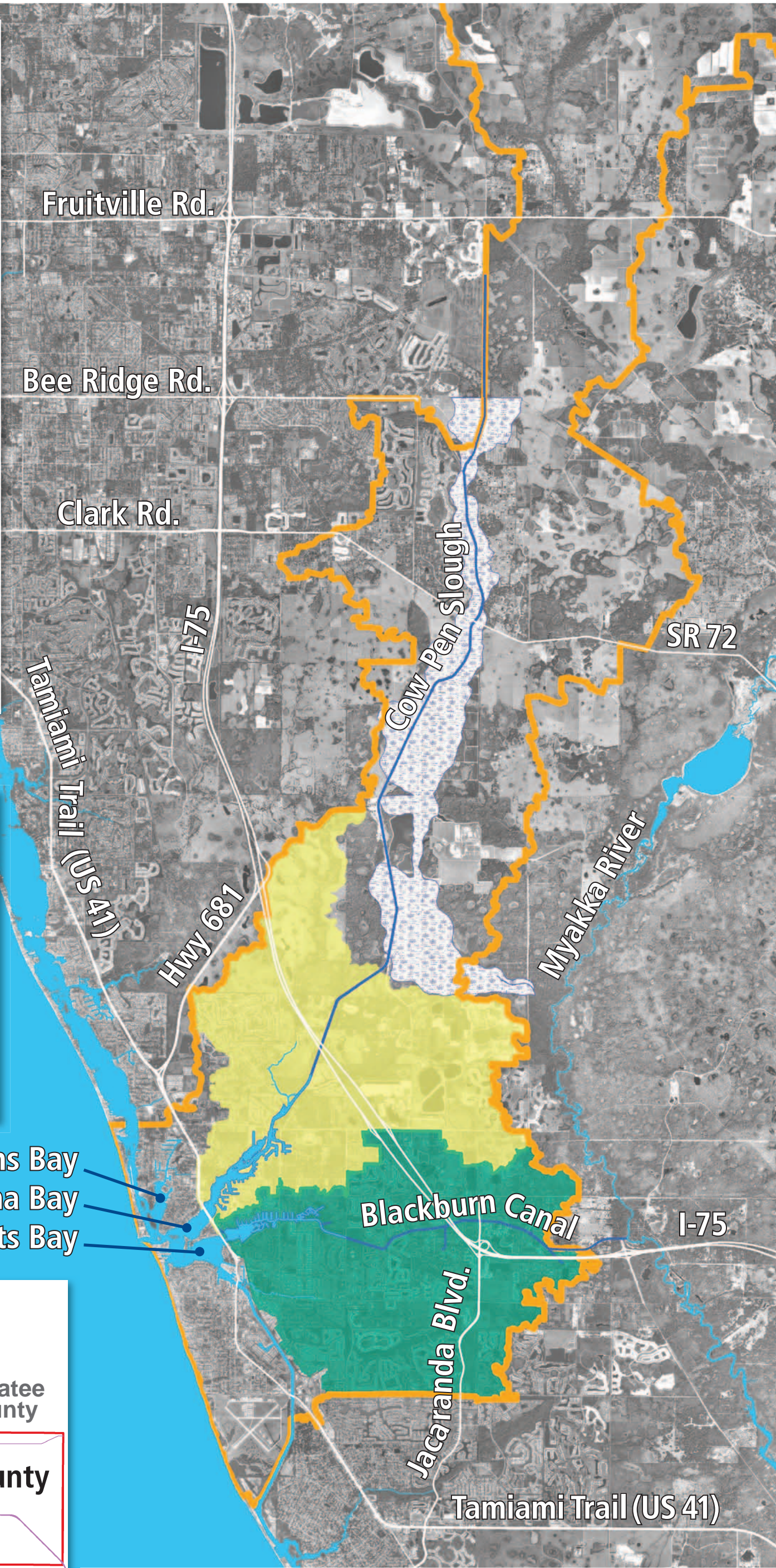


Small bays, large watershed






The yellow and green areas of this map depict the portions of Sarasota County that historically drained to Dona and Roberts bays, respectively. The blue-and-white hatched area depicts the marsh, now known as Cow Pen Slough, which once meandered toward the Myakka River. The marsh that once filtered and slowed runoff was drained and diverted to Dona Bay in the mid-1900s when the Cow Pen Slough canal was created.

After the canal was created, the historical Dona Bay drainage area depicted in yellow was expanded to include all of the acreage inside the thick orange line. In the rainy season, the canal carries large amounts of fresh water rapidly to the bay. This disrupts the balance of fresh and salt water in tidal creeks and bays.

Meantime, the historical Roberts Bay drainage area, depicted in green, was augmented by freshwater flows from the Blackburn Canal. Scientists estimate that at least 7 percent of freshwater flows in the Myakka River are diverted to Roberts Bay via the Blackburn Canal.



Dona and Roberts bays watersheds

-  Sarasota County boundary
-  Historic Dona Bay watershed
-  Historic Roberts Bay watershed
-  Historic marsh
-  Modern Dona and Roberts bays watershed

